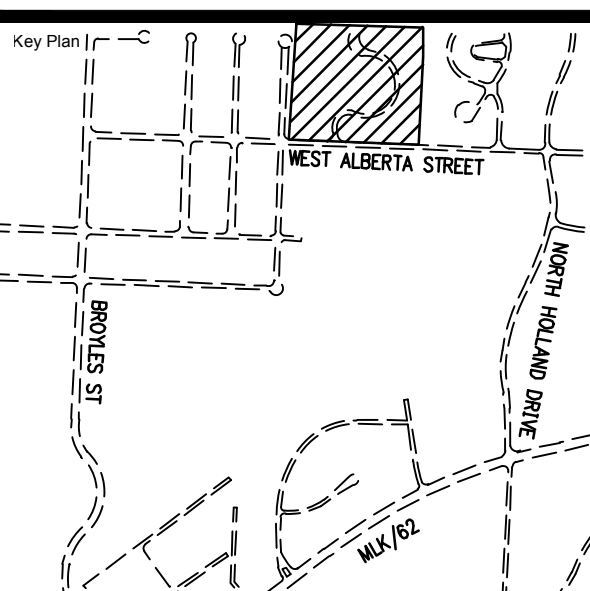


**THE COVES
PHASE II**
FAYETTEVILLE, ARKANSAS
NOTE: PLAT PAGE #555

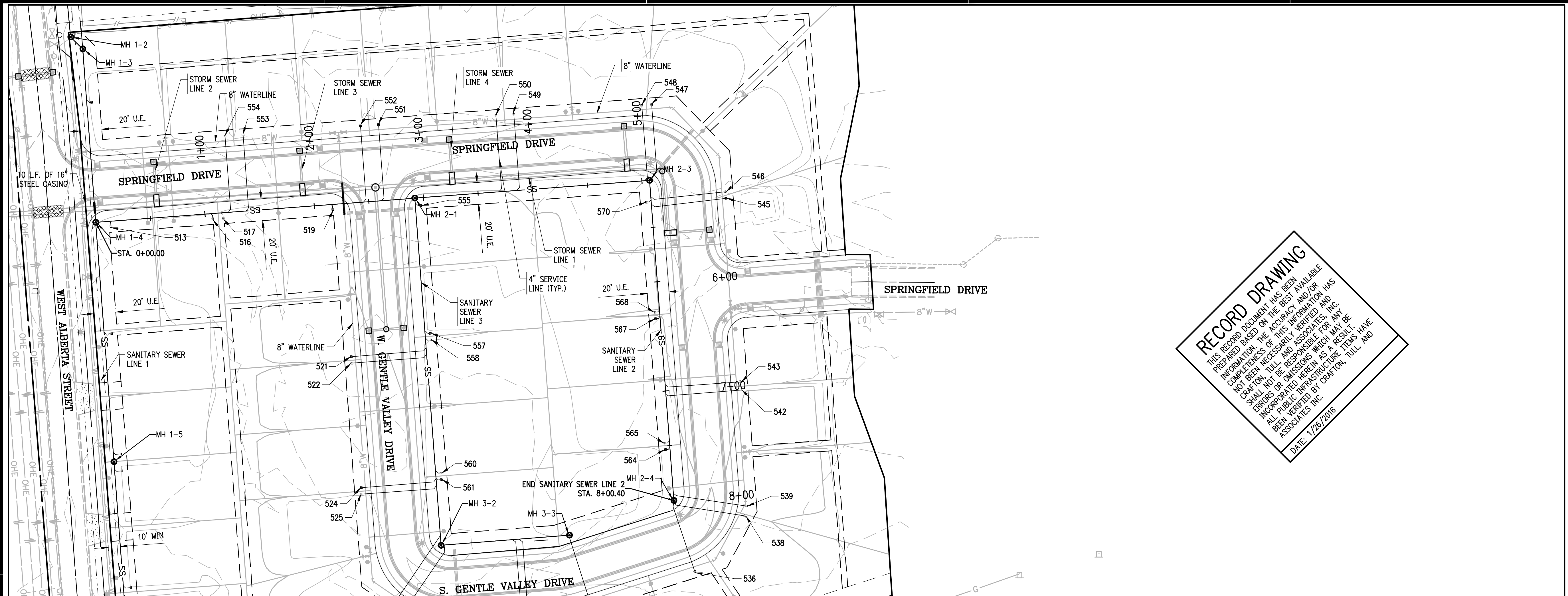


No.	Description	Code

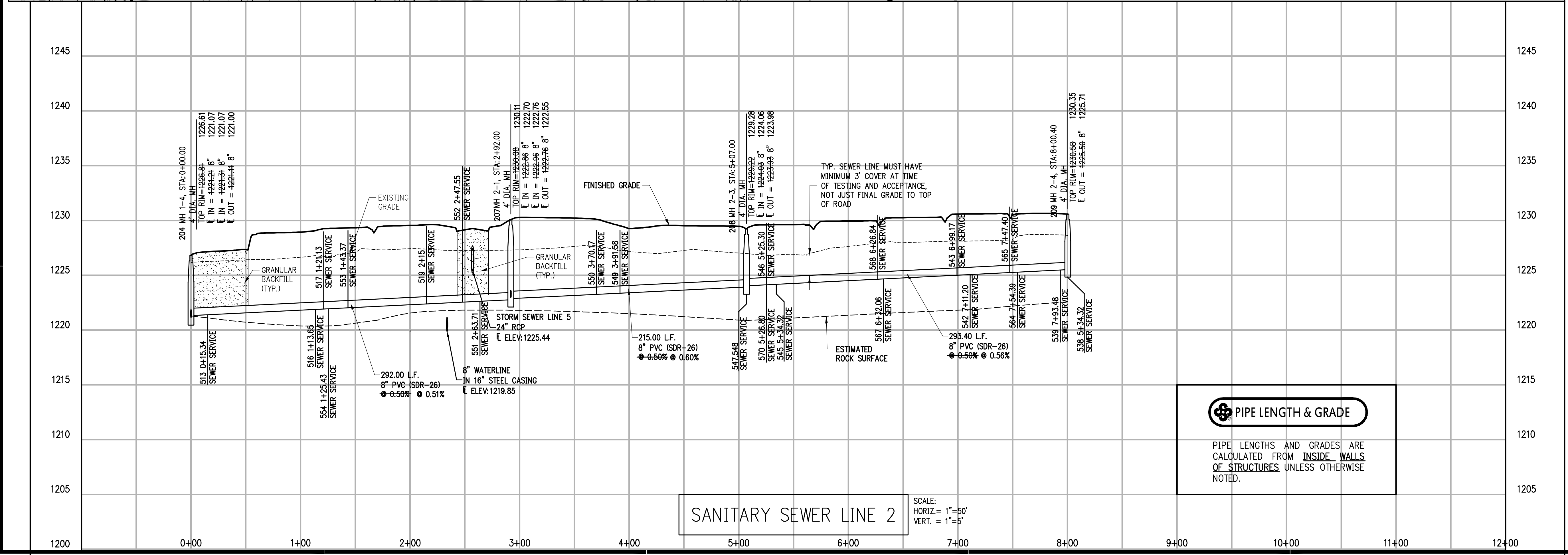
This document, and the ideas and designs incorporated herein, as an instrument of professional service, is the property of Crafton, Tull & Associates, Inc., and is not to be used, in whole or in part, for any other project, without the written authorization of Crafton, Tull & Associates, Inc.

PROJECT NO: 14101800
ISSUE DATE: 1/26/2016
CONTACT: Z. JOHNSTON
CHECKED BY:
REGISTERED PROFESSIONAL ENGINEER
No. 16439
ZACHARY JOHNSTON

02/01/2016
SANITARY SEWER LINE 2 P&P



RECORD DRAWING
THIS RECORD DOCUMENT HAS BEEN PREPARED BASED ON THE BEST AVAILABLE INFORMATION. THE ACCURACY AND/OR COMPLETENESS OF THIS INFORMATION HAS NOT BEEN NECESSARILY VERIFIED AND CRAFTON TULL AND ASSOCIATES, INC. SHALL NOT BE RESPONSIBLE FOR ANY ERRORS OR OMISSIONS WHICH MAY BE INCORPORATED HEREIN AS A RESULT OF ALL PUBLIC INFRASTRUCTURE ITEMS HAVE BEEN VERIFIED BY CRAFTON, TULL AND ASSOCIATES, INC.
DATE: 1/26/2016



PIPE LENGTH & GRADE
PIPE LENGTHS AND GRADES ARE CALCULATED FROM INSIDE WALLS OF STRUCTURES UNLESS OTHERWISE NOTED.

SANITARY SEWER LINE 2

DRAWING CONTAINS INFORMATION FROM PREVIOUS EDITIONS OF THIS PROJECT. THIS INFORMATION IS PROVIDED FOR INFORMATION ONLY. THE USER SHALL BE RESPONSIBLE FOR VERIFYING THE ACCURACY OF THIS INFORMATION.