

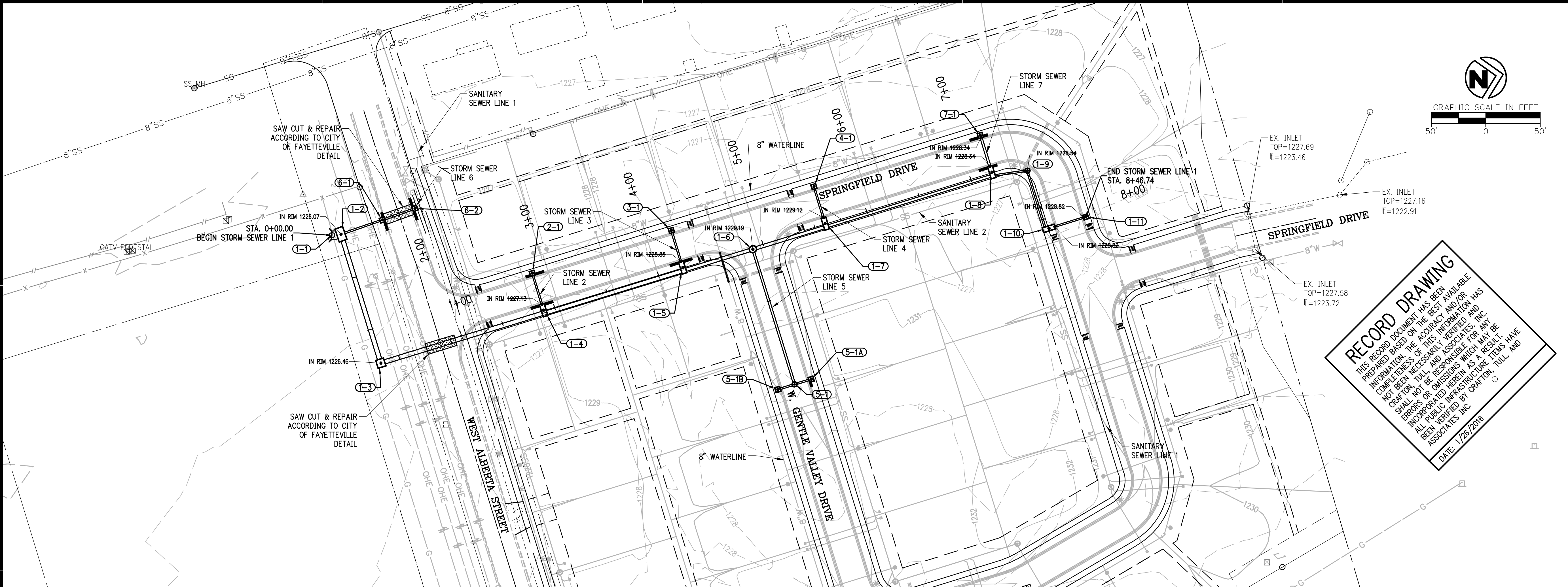
**THE COVES
PHASE II**
FAYETTEVILLE, ARKANSAS
NOTE: PLAT PAGE #555

PROJECT NO: 14101800
ISSUE DATE: 1/26/2016
CONTACT: Z. JOHNSTON
CHECKED BY: Ryan Johnston

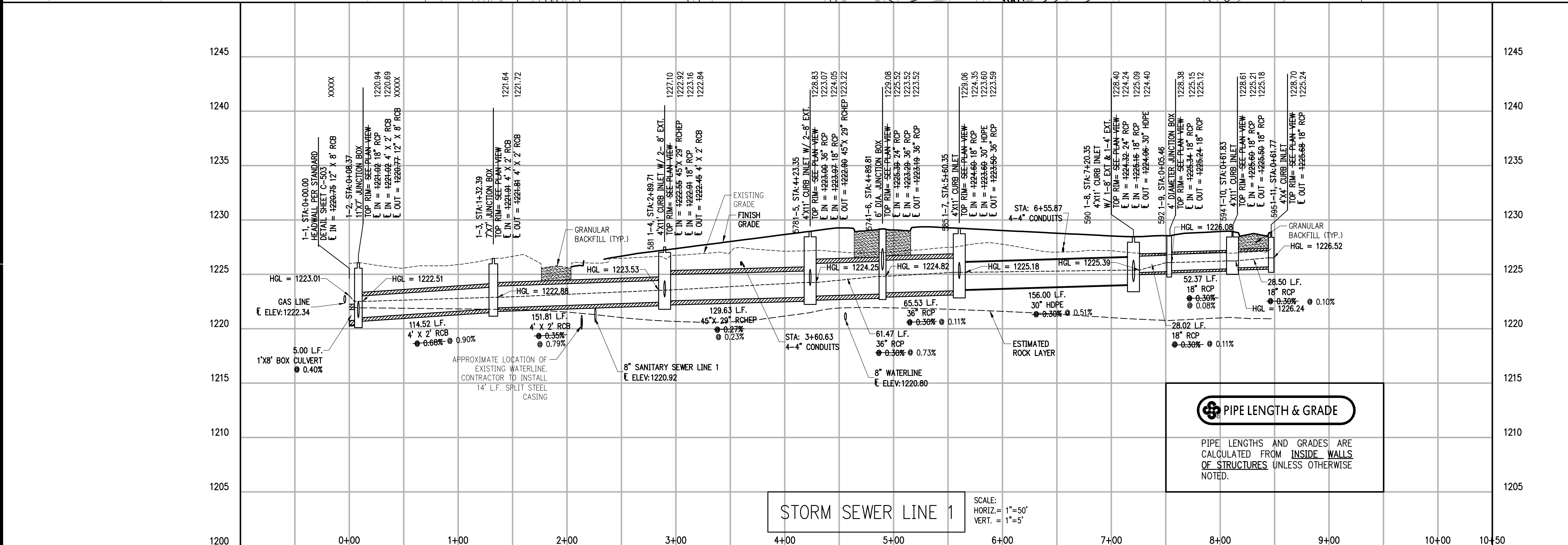
RECORD
DRAWING
No. 16439
RYAN ZACHARY JOHNSTON
02/01/2016

STATE OF ARKANSAS
REGISTERED PROFESSIONAL ENGINEER

STORM SEWER P&P
C-206



RECORD DRAWING
THIS RECORD DOCUMENT HAS BEEN PREPARED BASED ON THE BEST AVAILABLE INFORMATION. THE ACCURACY AND/OR COMPLETENESS OF THIS INFORMATION HAS NOT BEEN VERIFIED BY CRAFTON TULL AND ASSOCIATES, INC. CRAFTON TULL AND ASSOCIATES, INC. SHALL NOT BE RESPONSIBLE FOR ANY ERRORS OR OMISSIONS WHICH MAY BE INCORPORATED HEREIN AS A RESULT OF ALL PUBLIC IMPROVEMENTS THAT HAVE BEEN VERIFY BY CRAFTON TULL AND ASSOCIATES, INC.
DATE: 1/26/2016



STORM SEWER LINE 1

PIPE LENGTH & GRADE

PIPE LENGTHS AND GRADES ARE CALCULATED FROM INSIDE WALLS OF STRUCTURES UNLESS OTHERWISE NOTED.

SCALE:
HORIZ. = 1"=50'
VERT. = 1"=5'

DRAWING C-14101800-COVERTERS/CONCRETE/STORM SEWER P&P/PIPE
LAST PLOTTED BY: CHRISTIAN HANNAH, 1/27/2016 10:58 AM PLOTTED BY: WADE CHAMBERLAIN COPY 01/27