

1245		1245
1240		1240
1235		1235
1230		1230
1225		1225
1220		1220
1215		1215
1210		1210
1205		1205
1200		1200

881 1-4, STA-0+00.00  
 4"x11" CURB INLET W/ 2'-8" EXT.  
 TOP RIM = SEE PLAN VIEW 1227.10  
 IN = 4222.66 45° X 29' RCHP 1223.92  
 IN = 4222.91 18" RCP 1223.16  
 OUT = 4222.46 4' X 2' ROB 1222.84

880 2-1, STA-0+35.50  
 4"x4" CURB INLET W/ 1'-4" EXT.  
 TOP RIM = SEE PLAN VIEW 1227.11  
 OUT = 4222.49 18" RCP 1223.29

EXISTING GRADE

PROPOSED GRADE

GRANULAR BACKFILL (TYP.)

HGL = 1223.53

HGL = 1223.46

28.50 L.F.  
 18" RCP  
 @ 1.00% @ 0.46%

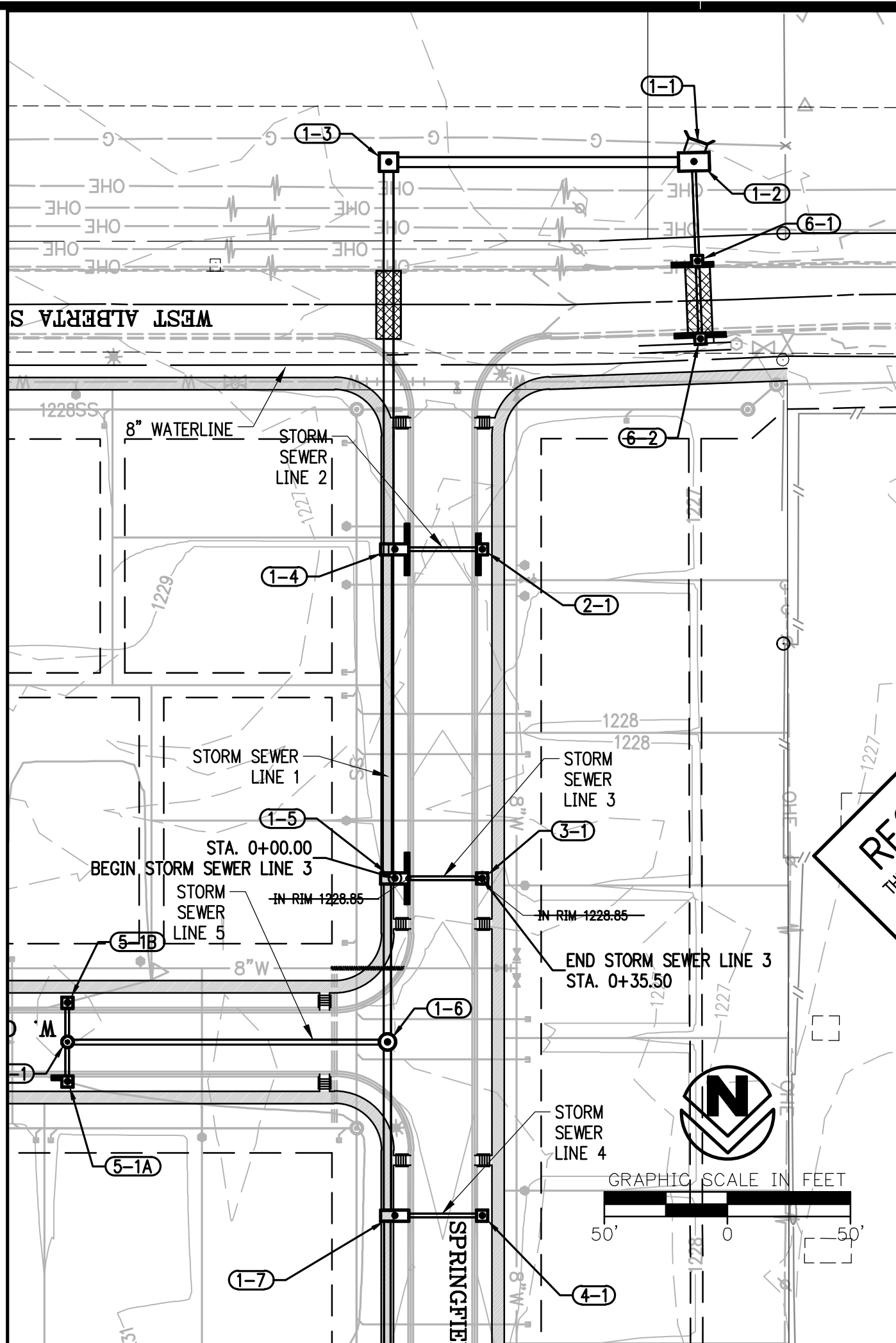
ESTIMATED ROCK LAYER

**PIPE LENGTH & GRADE**

PIPE LENGTHS AND GRADES ARE CALCULATED FROM INSIDE WALLS OF STRUCTURES UNLESS OTHERWISE NOTED.

**STORM SEWER LINE 2**

SCALE:  
 HORIZ. = 1"=50'  
 VERT. = 1"=5'



1245		1245
1240		1240
1235		1235
1230		1230
1225		1225
1220		1220
1215		1215
1210		1210
1205		1205
1200		1200

578 1-5, STA-0+00.00  
 4"x11" CURB INLET W/ 2'-8" EXT.  
 TOP RIM = SEE PLAN VIEW 1228.83  
 IN = 4223.60 36" RCP 1223.07  
 IN = 4223.97 18" RCP 1224.05  
 OUT = 4222.66 45° X 29' RCHP 1223.22

579 3-1, STA-0+35.50  
 4"x4" CURB INLET  
 TOP RIM = SEE PLAN VIEW 1228.74  
 OUT = 4224.06 18" RCP 1224.30

FINISH GRADE

EXISTING GRADE

GRANULAR BACKFILL (TYP.)

HGL = 1224.25

HGL = 1224.73

28.50 L.F.  
 18" RCP  
 @ 1.00% @ 0.88%

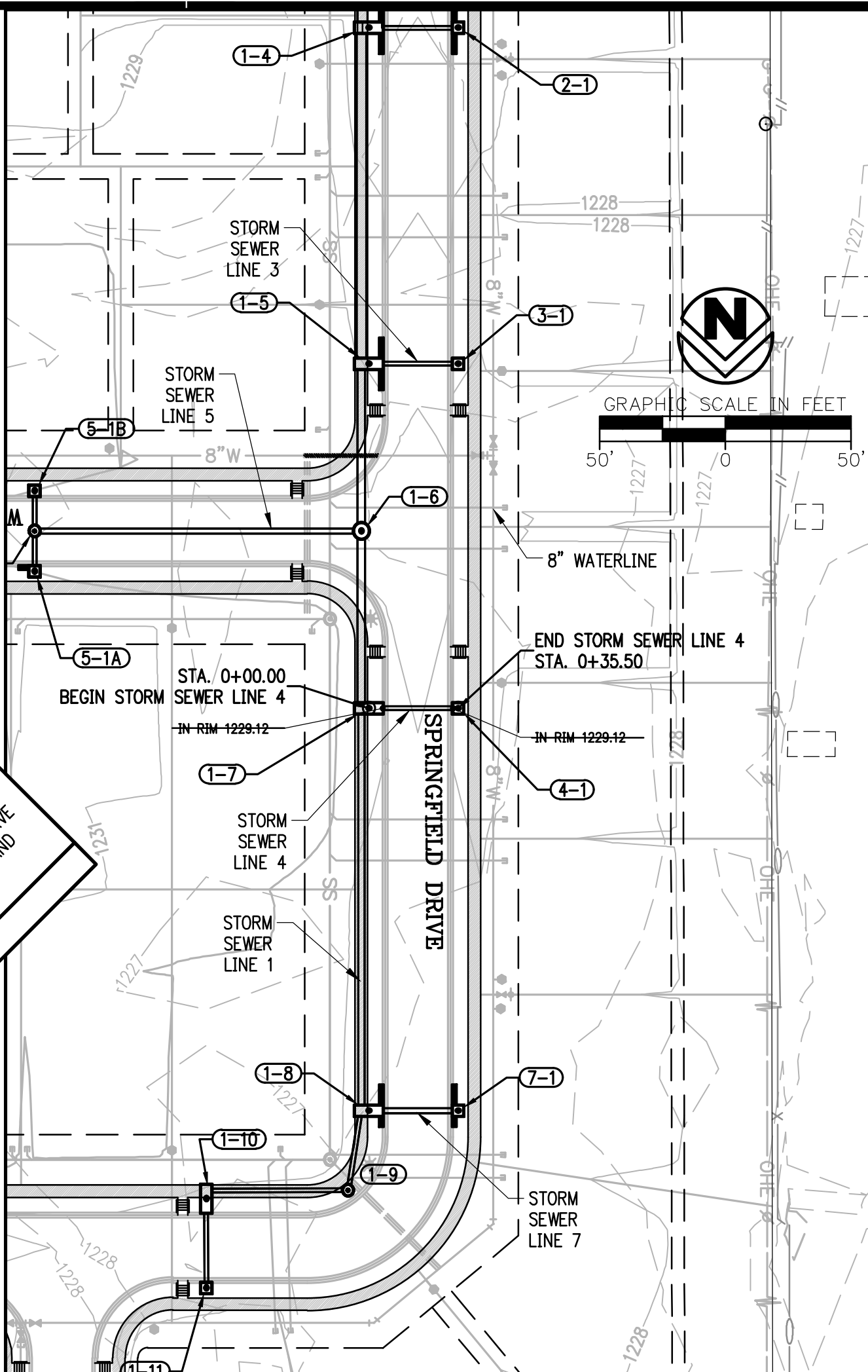
ESTIMATED ROCK LAYER

**PIPE LENGTH & GRADE**

PIPE LENGTHS AND GRADES ARE CALCULATED FROM INSIDE WALLS OF STRUCTURES UNLESS OTHERWISE NOTED.

**STORM SEWER LINE 3**

SCALE:  
 HORIZ. = 1"=50'  
 VERT. = 1"=5'



1245		1245
1240		1240
1235		1235
1230		1230
1225		1225
1220		1220
1215		1215
1210		1210
1205		1205
1200		1200

585 1-7, STA-0+00.00  
 4"x11" CURB INLET  
 TOP RIM = SEE PLAN VIEW 1228.06  
 IN = 4224.60 18" RCP 1224.35  
 IN = 4223.60 30" HDPE 1223.60  
 OUT = 4223.60 36" RCP 1223.59

586 4-1, STA-0+35.50  
 4"x4" CURB INLET  
 TOP RIM = SEE PLAN VIEW 1228.09  
 OUT = 4224.88 18" RCP 1224.70

FINISH GRADE

EXISTING GRADE

GRANULAR BACKFILL (TYP.)

HGL = 1225.18

HGL = 1225.16

28.50 L.F.  
 18" RCP  
 @ 1.00% @ 1.22%

ESTIMATED ROCK LAYER

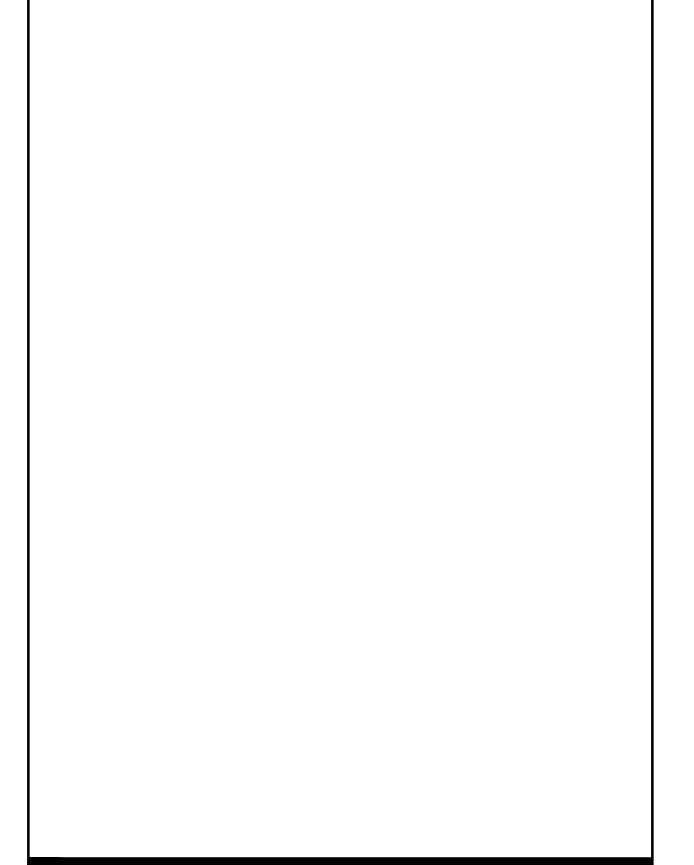
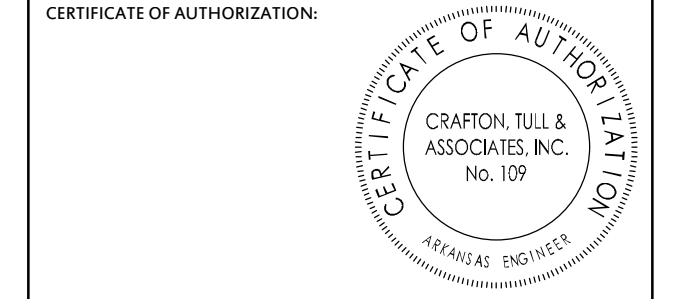
**PIPE LENGTH & GRADE**

PIPE LENGTHS AND GRADES ARE CALCULATED FROM INSIDE WALLS OF STRUCTURES UNLESS OTHERWISE NOTED.

**STORM SEWER LINE 4**

SCALE:  
 HORIZ. = 1"=50'  
 VERT. = 1"=5'

**RECORD DRAWING**  
 THIS RECORD DOCUMENT HAS BEEN PREPARED BASED ON THE BEST AVAILABLE INFORMATION. THE ACCURACY AND/OR COMPLETENESS OF THIS INFORMATION HAS NOT BEEN NECESSARILY VERIFIED AND CRAFTON, TULL AND ASSOCIATES, INC. SHALL NOT BE RESPONSIBLE FOR ANY ERRORS OR OMISSIONS WHICH MAY BE INCORPORATED HEREIN AS A RESULT OF BEING INCORPORATED BY CRAFTON, TULL AND ASSOCIATES, INC.  
 DATE: 1/26/2016



**THE COVES  
 PHASE II**  
 FAYETTEVILLE, ARKANSAS  
 NOTE: PLAT PAGE #555

No.	Description	Code

This document, and the ideas and designs incorporated herein, as an instrument of professional service, is the property of Crafton, Tull & Associates, Inc., and is not to be used, in whole or in part, for any other project, without the written authorization of Crafton, Tull & Associates, Inc.

PROJECT NO: 14101800  
 ISSUE DATE: 1/26/2016  
 CONTACT: Z. JOHNSTON  
 CHECKED BY: Z. JOHNSTON

**RECORD DRAWING**

STATE OF ARKANSAS  
 REGISTERED PROFESSIONAL ENGINEER  
 No. 16439  
 ZACHARY JOHNSTON  
 02/01/2016