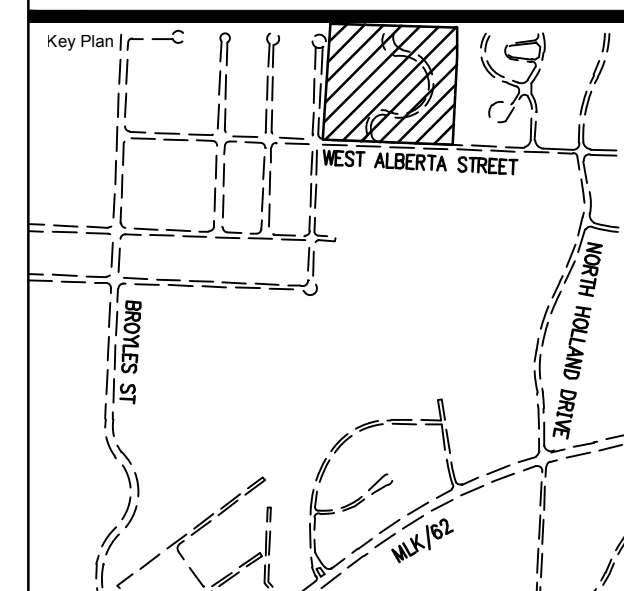


**THE COVES
PHASE II**
FAYETTEVILLE, ARKANSAS
NOTE: PLAT PAGE #555

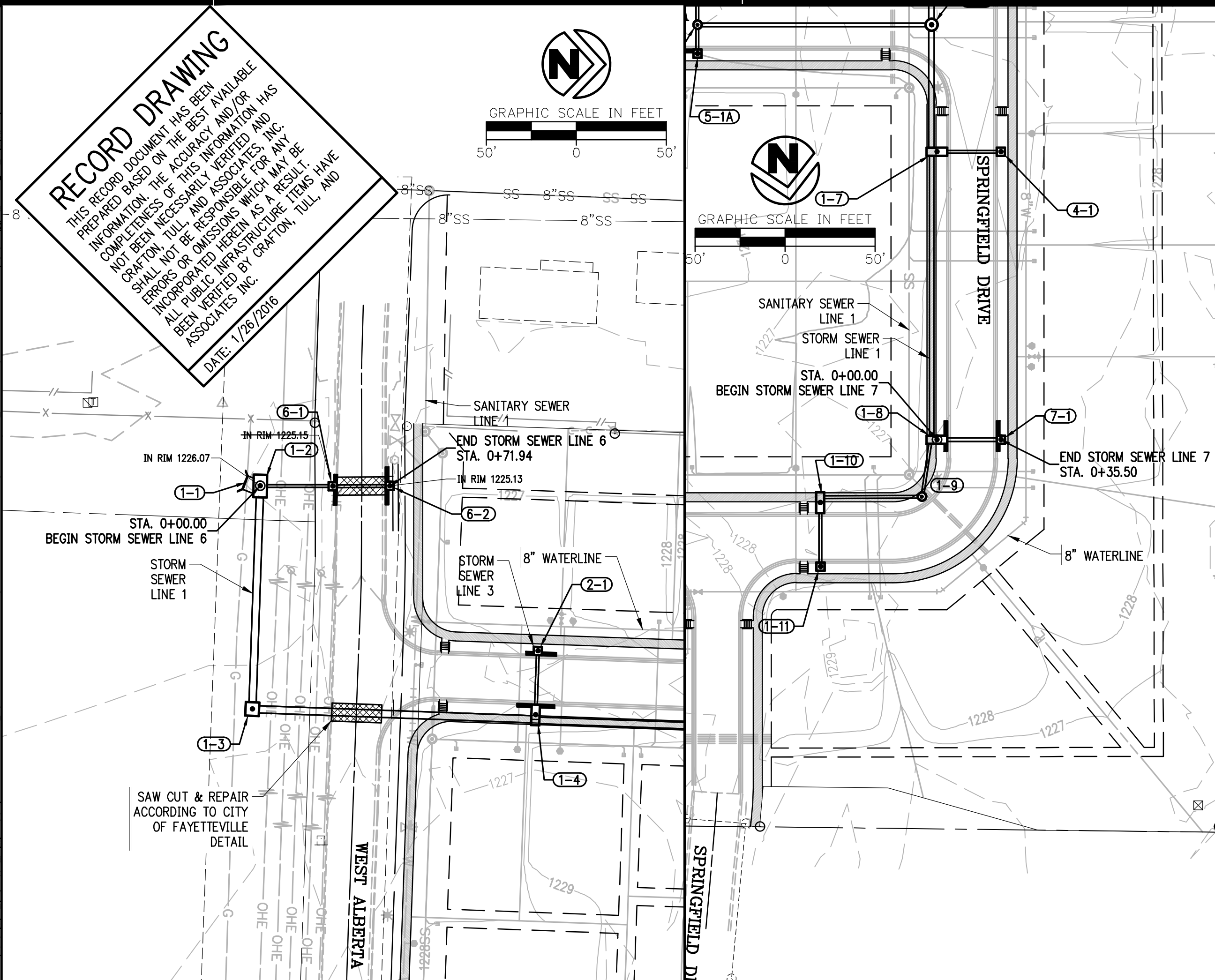


No.	Description	Code

This document, and the ideas and designs incorporated herein, as an instrument of professional service, is the property of Crafton, Tull & Associates, Inc., and is not to be used, in whole or in part, for any other project, without the written authorization of Crafton, Tull & Associates, Inc.

PROJECT NO: 14101800
ISSUE DATE: 1/26/2016
CONTACT: Z. JOHNSTON
CHECKED BY: Z. JOHNSTON
RECORD DRAWING
REGISTERED PROFESSIONAL ENGINEER
No. 16439
ZACHARY JOHNSTON
02/01/2016

STORM SEWER P&P



PIPE LENGTH & GRADE

PIPE LENGTHS AND GRADES ARE CALCULATED FROM INSIDE WALLS OF STRUCTURES UNLESS OTHERWISE NOTED.

STORM SEWER LINE 7

SCALE:
HORIZ. = 1"=50'
VERT. = 1"=5'

1205
1210
1215
1220
1225
1230
1235
1240
1245

0+00 1+00 1+36

576 7-1, STA: 0+35.50
4" DIA. CURB INLET
W/ (0.8' EXT. & (0.1' EXT.)
TOP RIM = SEE PLAN VIEW
E. IN = 1225.13
E. OUT = 1224.10
● 0.40% ● 0.21%

580 1-8, STA: 0+00.00
4" XIT CURB INLET
W/ (0.8' EXT. & (0.1' EXT.)
TOP RIM = SEE PLAN VIEW
E. IN = 1224.40
E. OUT = 1224.24
● 0.40% ● 0.21%

FINISH GRADE
HGL = 1225.39

EXISTING GRADE
HGL = 1226.07

GRANULAR BACKFILL (TYP.)

28.50 L.F.
24" RCP
● 0.40% ● 0.21%

ESTIMATED ROCK LAYER

PIPE LENGTH & GRADE

PIPE LENGTHS AND GRADES ARE CALCULATED FROM INSIDE WALLS OF STRUCTURES UNLESS OTHERWISE NOTED.

STORM SEWER LINE 6

SCALE:
HORIZ. = 1"=50'
VERT. = 1"=5'

1205
1210
1215
1220
1225
1230
1235
1240
1245

0+00 1+00 2+00

1-2, STA: 0+00.00
12" X 6" JUNCTION BOX
TOP RIM = SEE PLAN VIEW
E. IN = 1220.94
E. OUT = 1220.69
● 0.34% ● 0.40%

1425 6-1, STA: 0+08.37
4" DIA. CURB INLET AND (0.8' EXT.)
TOP RIM = SEE PLAN VIEW
E. IN = 1221.08
E. OUT = 1221.06
● 0.40% ● 0.25%

1424 6-2, STA: 0+08.37
4" X 4" CURB INLET
TOP RIM = SEE PLAN VIEW
E. IN = 1225.13
E. OUT = 1221.15
● 0.40% ● 0.25%

FINISH GRADE
HGL = 1222.93

EXISTING GRADE
HGL = 1222.51

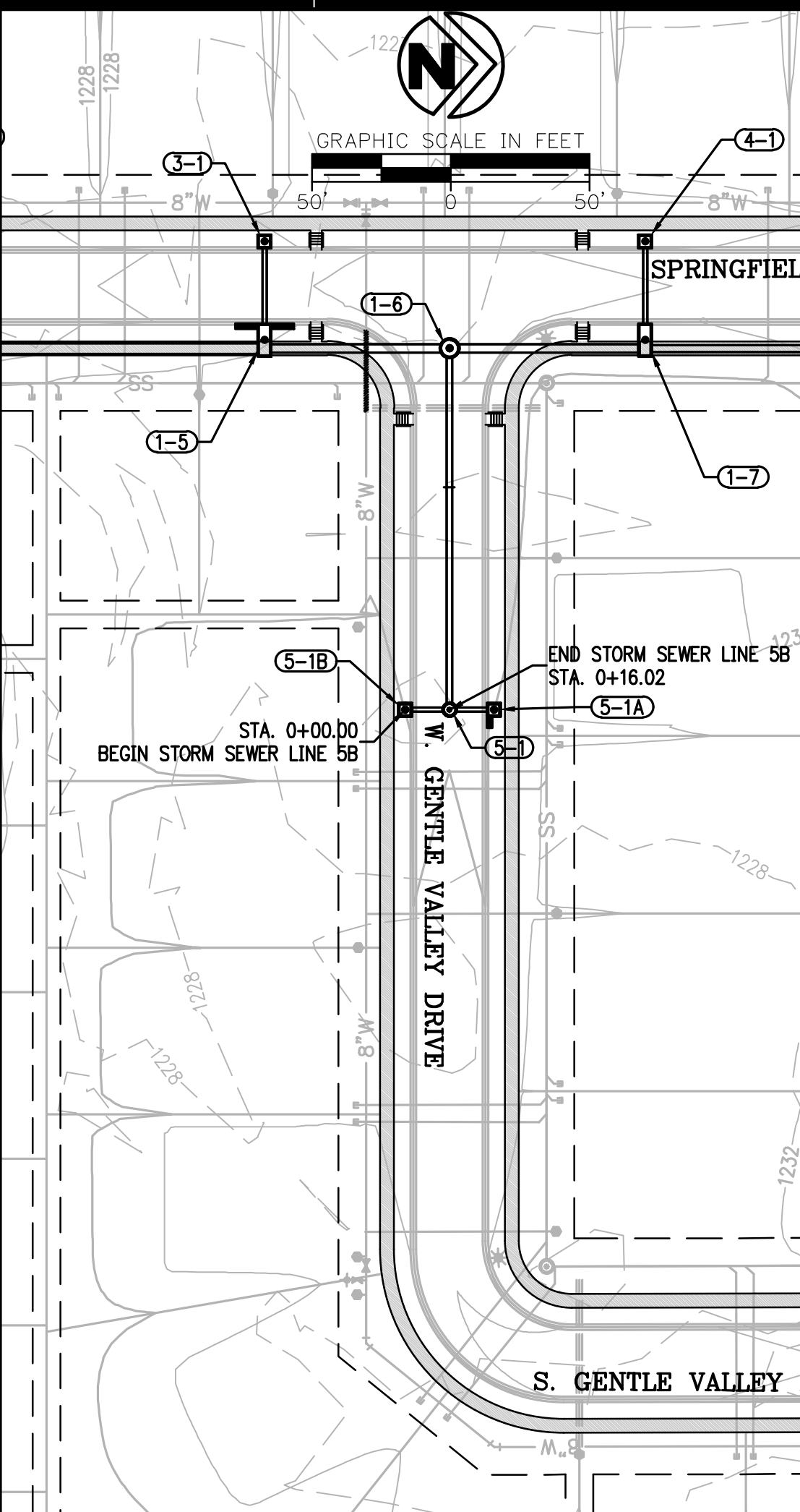
GRANULAR BACKFILL (TYP.)

35.27 L.F.
18" RCP
● 0.34% ● 0.40%

27.68 L.F.
18" RCP
● 0.40% ● 0.25%

SAW CUT & REPAIR
ACCORDING TO CITY
OF FAYETTEVILLE
DETAIL

ESTIMATED ROCK LAYER



PIPE LENGTH & GRADE

PIPE LENGTHS AND GRADES ARE CALCULATED FROM INSIDE WALLS OF STRUCTURES UNLESS OTHERWISE NOTED.

STORM SEWER LINE 5B

SCALE:
HORIZ. = 1"=50'
VERT. = 1"=5'

1205
1210
1215
1220
1225
1230
1235
1240
1245

0+00 1+00

576 5-1B, STA: 0+16.02
4" X 4" CURB INLET
TOP RIM = 1229.67
E. OUT = 1226.59

571 5-1, STA: 0+16.02
4" DIA. JUNCTION BOX
TOP RIM = 1229.70
E. IN = 1226.54
E. OUT = 1226.50
● 0.40% ● 0.75%

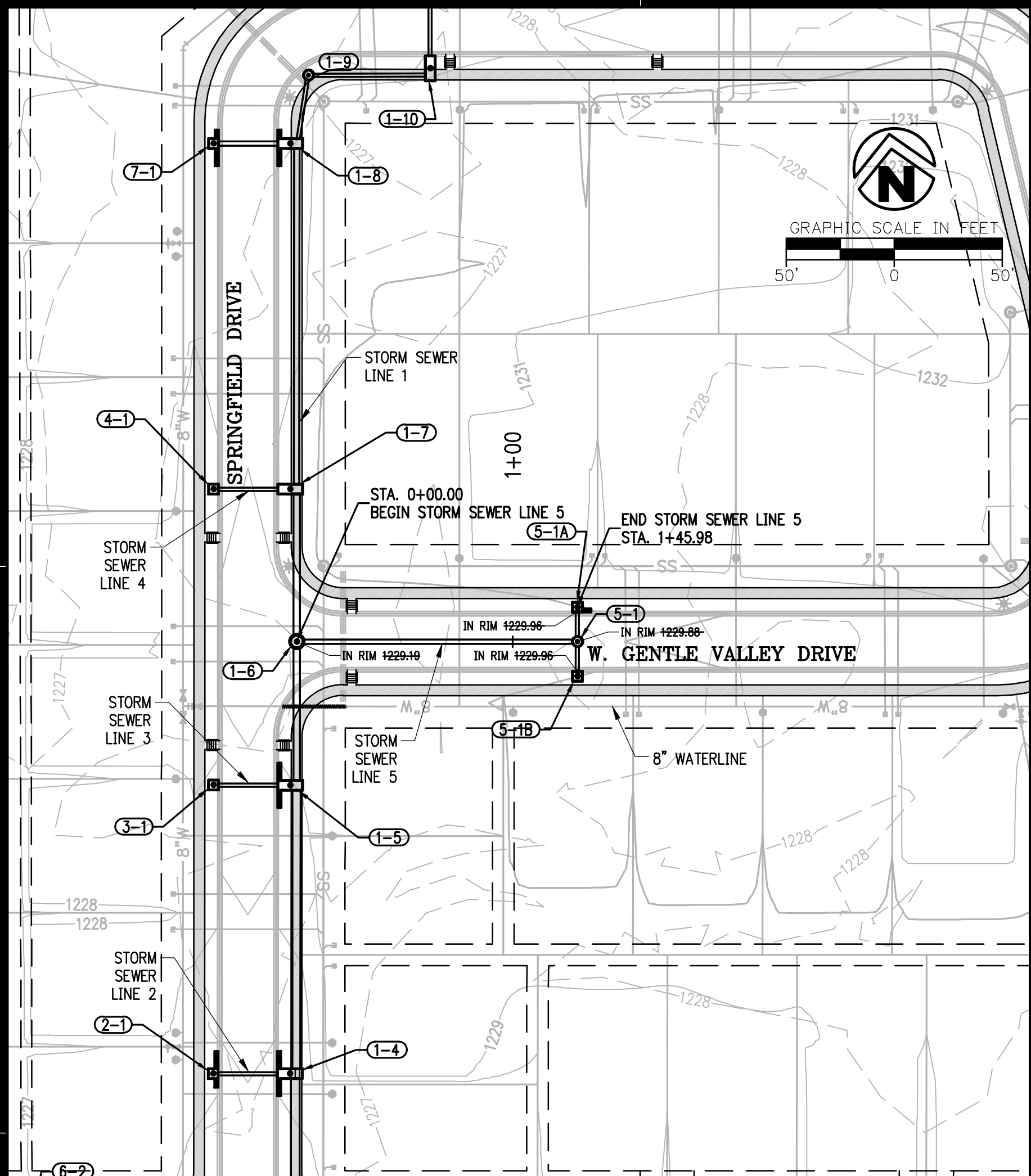
FINISH GRADE
HGL = 1222.77

EXISTING GRADE
HGL = 1222.50

GRANULAR BACKFILL (TYP.)

12.02 L.F.
18" RCP
● 0.40% ● 0.75%

ESTIMATED ROCK LAYER



PIPE LENGTH & GRADE

PIPE LENGTHS AND GRADES ARE CALCULATED FROM INSIDE WALLS OF STRUCTURES UNLESS OTHERWISE NOTED.

STORM SEWER LINE 5

SCALE:
HORIZ. = 1"=50'
VERT. = 1"=5'

1205
1210
1215
1220
1225
1230
1235
1240
1245

0+00 1+00 2+00 3+00

574, STA: 0+00.00
CONSTRUCT TOP RIM = SEE PLAN VIEW
E. IN = 1229.50
E. OUT = 1223.52
● 0.40% ● 0.36%

571 5-1, STA: 0+16.02
4" DIA. JUNCTION BOX
TOP RIM = 1229.70
E. IN = 1226.54
E. OUT = 1226.50
● 0.40% ● 0.58%

576 5-1A, STA: 1+45.98
4" X 4" CURB INLET
TOP RIM = 1229.80
E. OUT = 1226.57

FINISH GRADE
HGL = 1224.82

EXISTING GRADE
HGL = 1226.77

GRANULAR BACKFILL (TYP.)

25.00 L.F.
24" RCP
● 0.40% ● 0.54%

11.98 L.F.
18" RCP
● 0.40% ● 0.58%

ESTIMATED ROCK LAYER

DRAWING GOVERNOR'S OFFICE RECORDS DIVISION, FAYETTEVILLE, ARKANSAS. FILED IN 1/26/2016. 1:17 PM. PROJECT NO. 14101800. DATE: 1/26/2016. BY: ZACHARY JOHNSTON