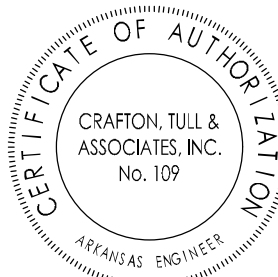
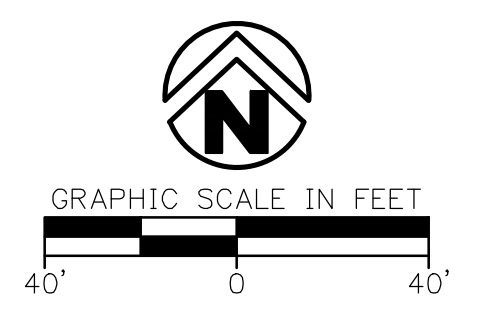


CERTIFICATE OF AUTHORIZATION  
  
 CRAFTON TULL & ASSOCIATES, INC.  
 No. 109  
 REGISTERED ENGINEER



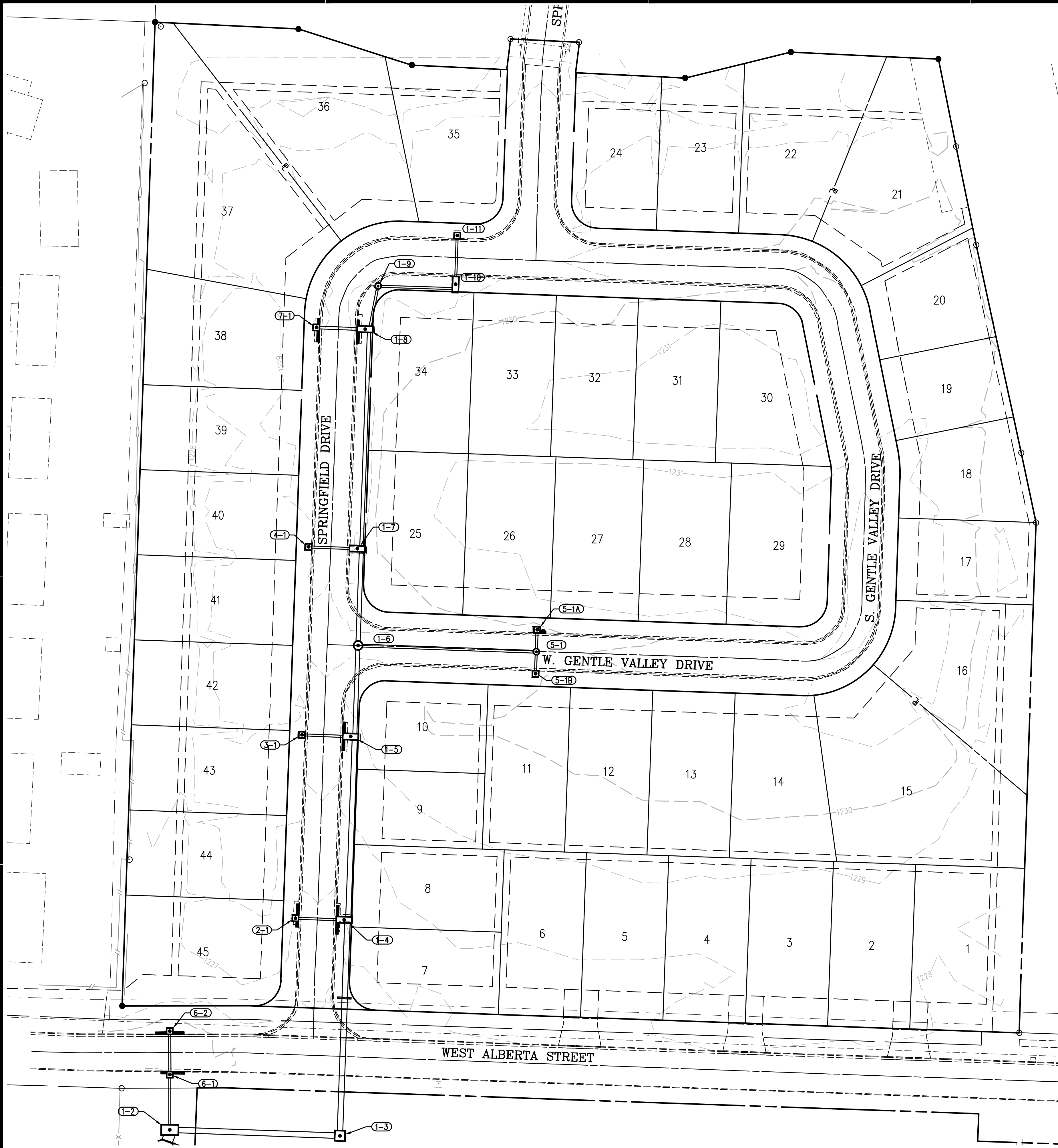
**RECORD DRAWING**  
 THIS RECORD DOCUMENT HAS BEEN PREPARED BASED ON THE BEST AVAILABLE INFORMATION THE ACCURACY AND/OR COMPLETENESS OF THIS INFORMATION HAS NOT BEEN NECESSARILY VERIFIED AND CRAFTON TULL AND ASSOCIATES, INC. SHALL NOT BE RESPONSIBLE FOR ANY ERRORS OR OMISSIONS WHICH MAY BE INCORPORATED HEREIN AS A RESULT OF ALL PUBLIC INFRASTRUCTURE ITEMS HAVE BEEN VERIFIED BY CRAFTON TULL AND ASSOCIATES, INC.  
 DATE: 1/26/2016

**LEGEND (EXISTING)**

SYMBOLS	
	FOUND IRON PIN
	LIGHT POLE
	POWER POLE
	TELEPHONE PEDESTAL
	TV PEDESTAL
	MANHOLE
	SANITARY SEWER CLEANOUT
	GAS METER
	GAS VALVE
	STORM SEWER PIPE
	WATER VALVE
	FIRE HYDRANT ASSEMBLY
	WATER METER
	SPRINKLER HEAD
	ELECTRIC PEDESTAL
	DROP INLET

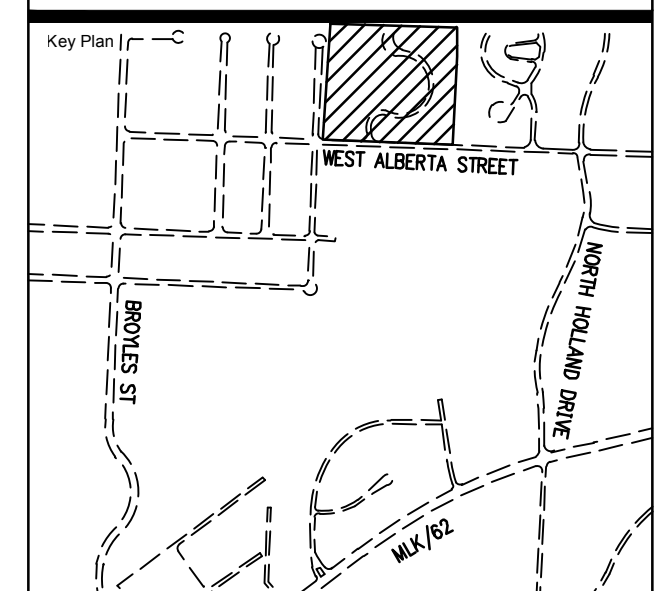
LINEWORK	
	EASEMENT
	CURB
	SANITARY SEWER LINE
	GAS LINE
	WATER LINE (SPECIFY SIZE & TYPE)
	UNDERGROUND TELEPHONE
	UNDERGROUND ELECTRIC
	OVERHEAD ELECTRIC
	UNDERGROUND TELEVISION
	OVERHEAD TELEVISION
	RIGHT OF WAY



DRAWING C:\1\11800 COVES\PHASE II\RECORD\TOPO\ARLISL10P.DWG  
 DATE PLOTTED BY: CRYSTAL HAWKINS 1/27/2016 10:12 AM PLOTTED BY: VALE CHUMBAO COPY ONLY


**THE COVES  
 PHASE II**

FAYETTEVILLE, ARKANSAS  
 NOTE: PLAT PAGE #555



No.	Description	Code

This document, and the ideas and designs incorporated herein, as an instrument of professional service, is the property of Crafton, Tull & Associates, Inc., and is not to be used, in whole or in part, for any other project, without the written authorization of Crafton, Tull & Associates, Inc.

PROJECT NO: 14101800  
 ISSUE DATE: 1/26/2016  
 CONTACT: Z. JOHNSTON  
 CHECKED BY:   
**RECORD  
 DRAWING**  
 STATE OF ARKANSAS  
 REGISTERED PROFESSIONAL ENGINEER  
 No. 16439  
 RYAN ZACHARY JOHNSTON

© 2014 Crafton, Tull & Associates, Inc.  
 RECORD TOPO  
 02/01/2016

**C-209**