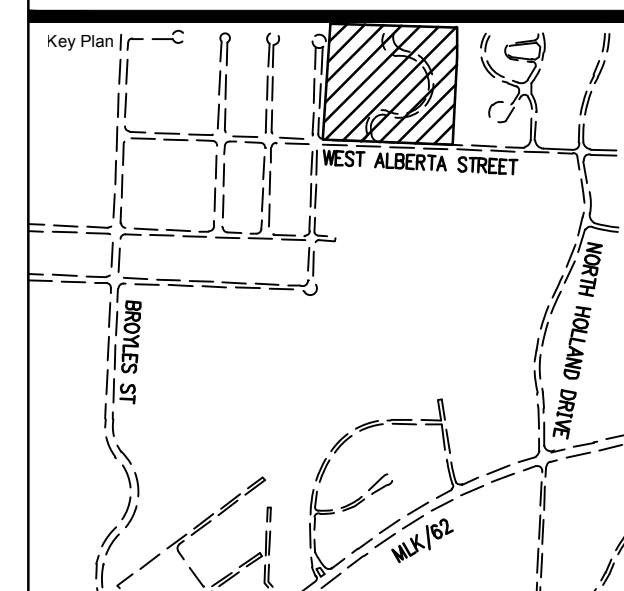


**THE COVES
PHASE II**
FAYETTEVILLE, ARKANSAS
NOTE: PLAT PAGE #555

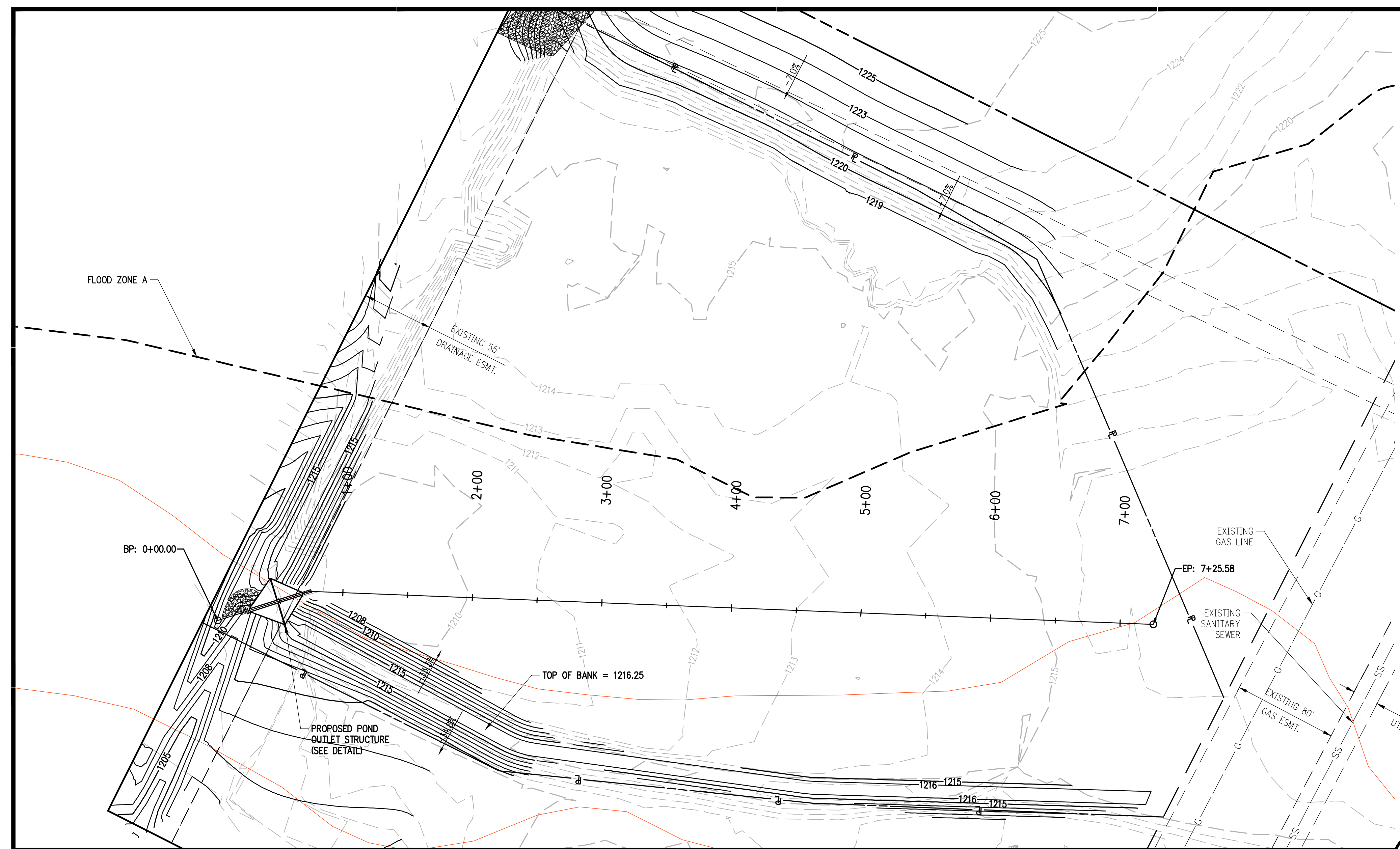


No.	Description	Date
1	REVISED POND AND ADDED DETAIL	08-01-2014
2	DG: REVISED OUTLET STRUCTURE	08-28-2014

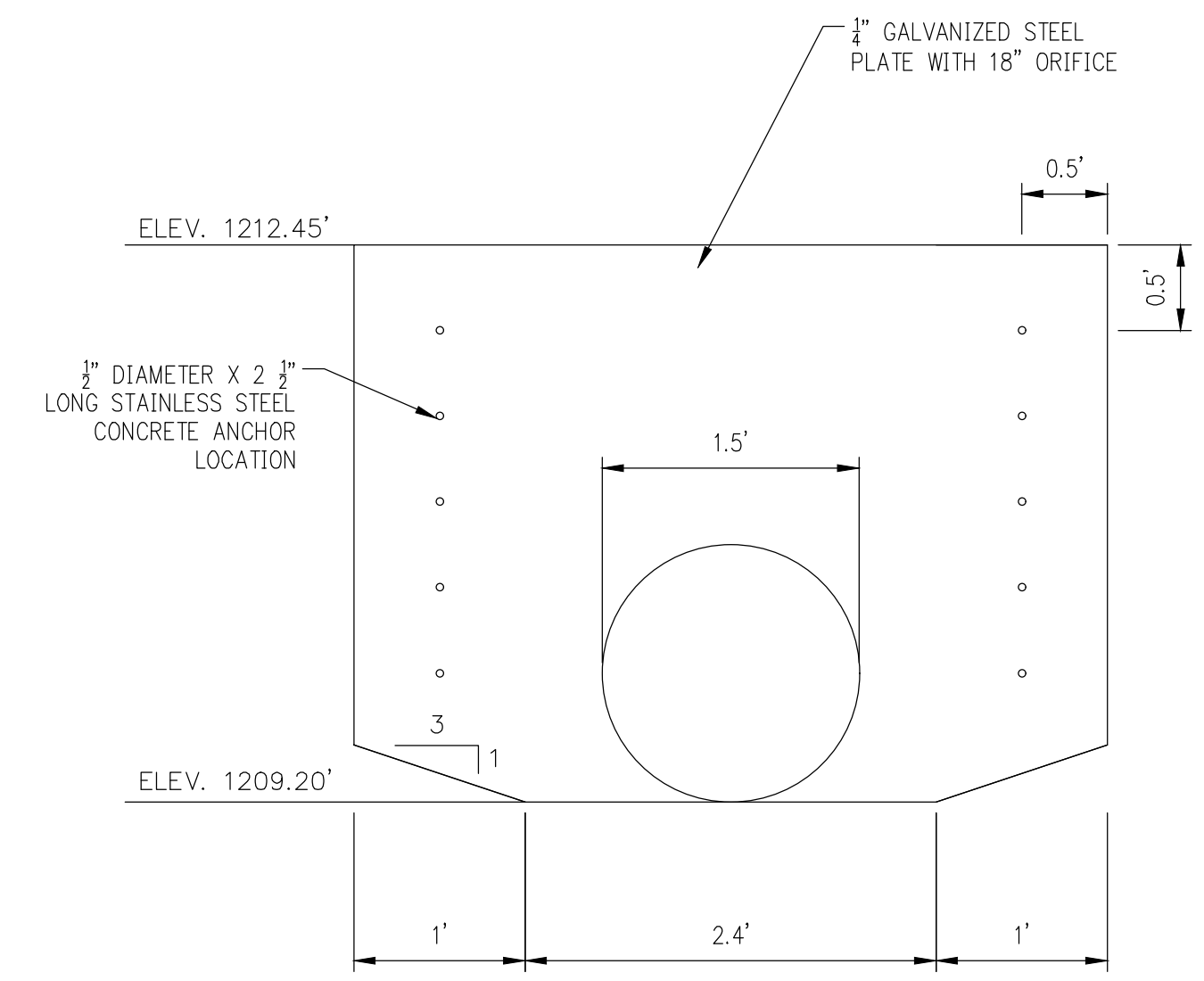
This document, and the ideas and designs incorporated herein, as an instrument of professional service, is the property of Crafton, Tull & Associates, Inc., and is not to be used, in whole or in part, for any other project, without the written authorization of Crafton, Tull & Associates, Inc.

PROJECT NO: 14101800
ISSUE DATE: 1/26/2016
CONTACT: Z. JOHNSTON
CHECKED BY: ZACHARY JOHNSTON
STATE OF ARKANSAS
REGISTERED PROFESSIONAL ENGINEER
No. 16439

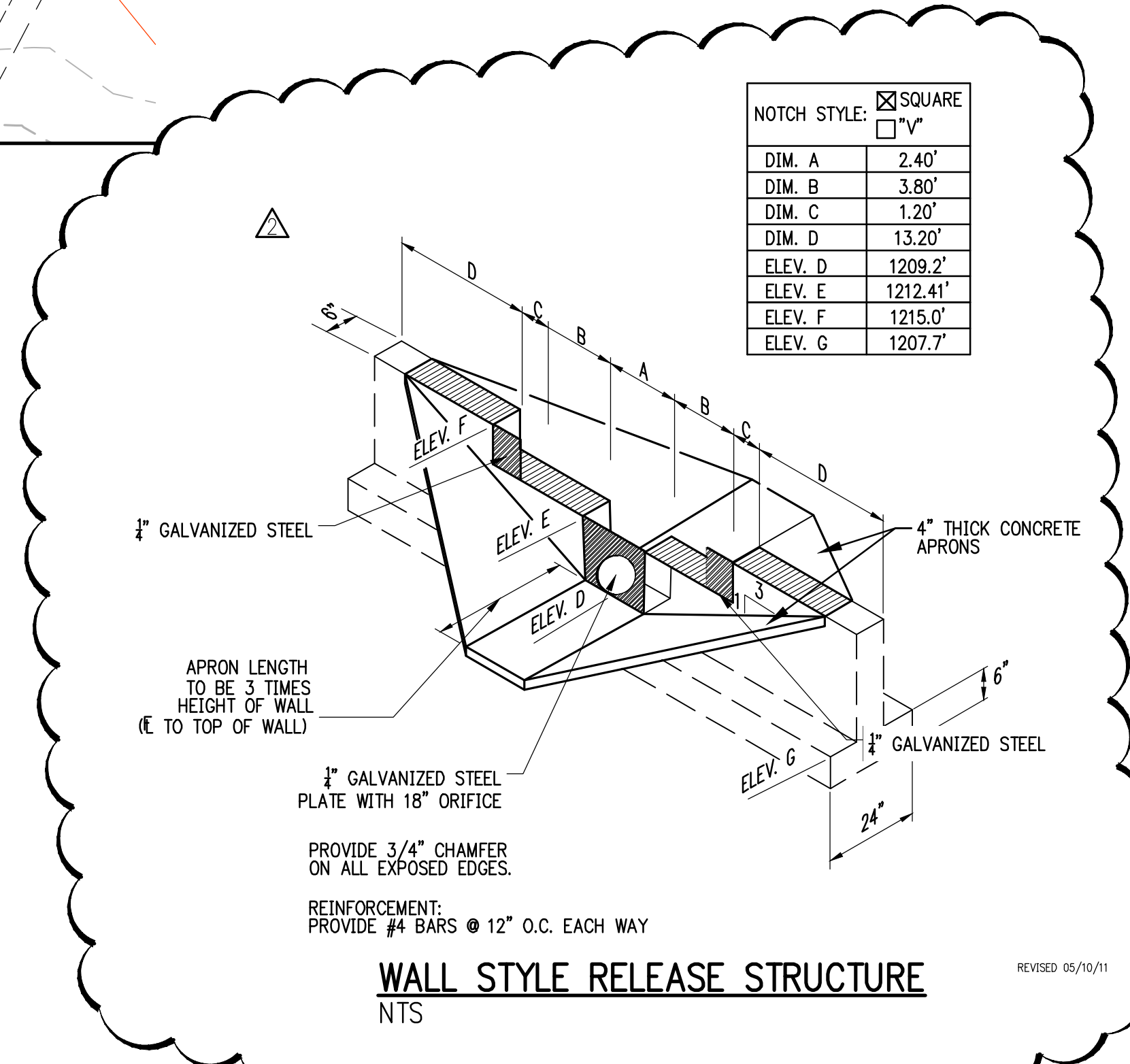
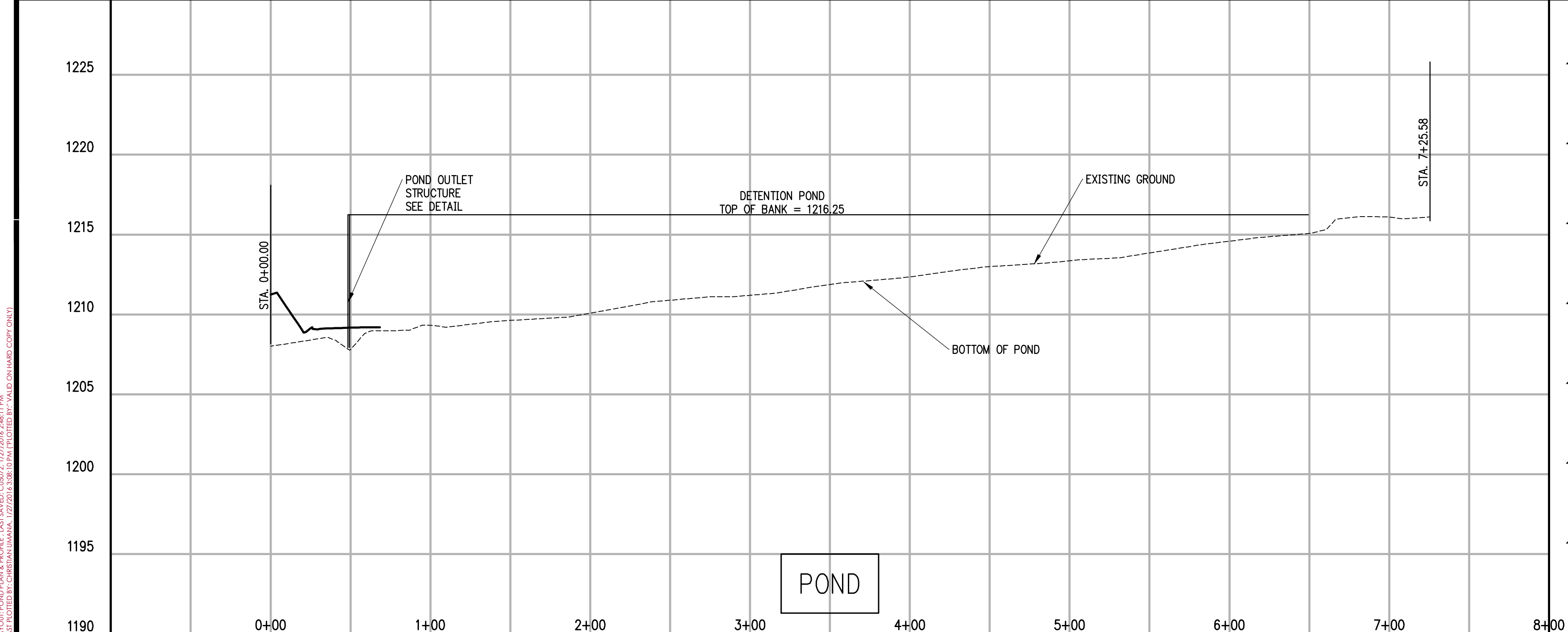
RECORD DRAWING
APPROVED POND PLAN & PROFILE



- GENERAL NOTES:
1. ORIFICE PLATE TO BE INSTALLED ON THE NE SIDE OF THE OUTLET STRUCTURE.
2. ORIFICE PLATE IS TO BE SECURED WITH 1/2" DIA. X 2 1/2" STAINLESS STEEL CONCRETE ANCHORS 6" O.C.



WEIR WALL ORIFICE PLATE
SCALE 1" = 1'



NOTCH STYLE: SQUARE V

DIM. A	2.40'
DIM. B	3.80'
DIM. C	1.20'
DIM. D	13.20'
ELEV. D	1209.2'
ELEV. E	1212.41'
ELEV. F	1215.0'
ELEV. G	1207.7'

WALL STYLE RELEASE STRUCTURE
NTS

DRAWING GOVERNOR'S OFFICE/COMMISSIONED DRAWING/ISSUED BY: Z. JOHNSTON/DATE: 1/26/2016/PROJECT: THE COVES PHASE II/NOTED BY: ZACHARY JOHNSTON