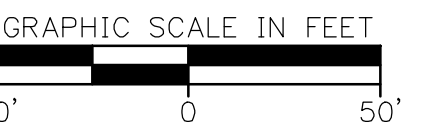
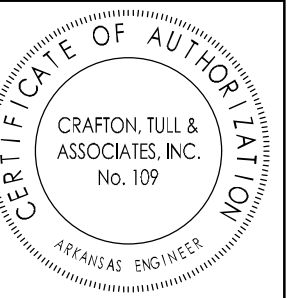
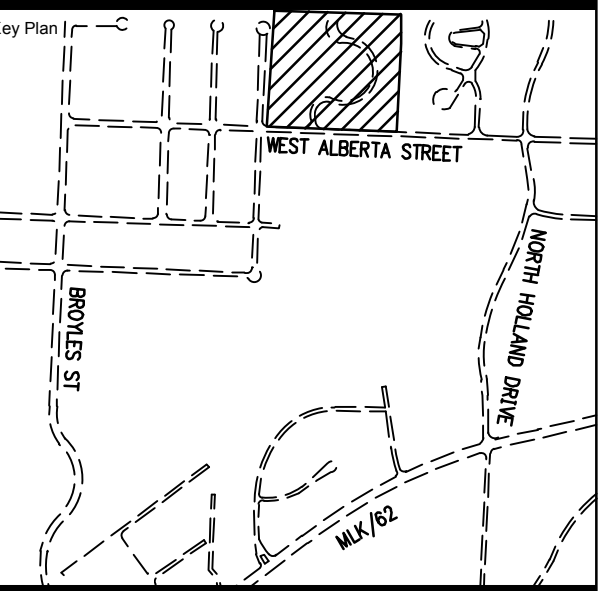


CERTIFICATE OF AUTHORIZATION:



**THE COVES  
PHASE II**

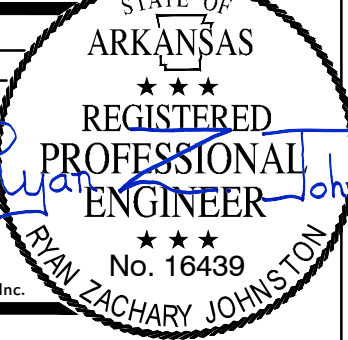
FAYETTEVILLE, ARKANSAS  
NOTE: PLAT PAGE #555



No.	Description	Date
1	REVISED GRADIN	08-01-2014

This document, and the ideas and designs incorporated herein, as an instrument of professional service, is the property of Crafton, Tull & Associates, Inc., and is not to be used, in whole or in part, for any other project, without the written authorization of Crafton, Tull & Associates, Inc.

PROJECT NO: 14101800  
ISSUE DATE: 1/26/2016  
CONTACT: Z. JOHNSTON  
CHECKED BY:



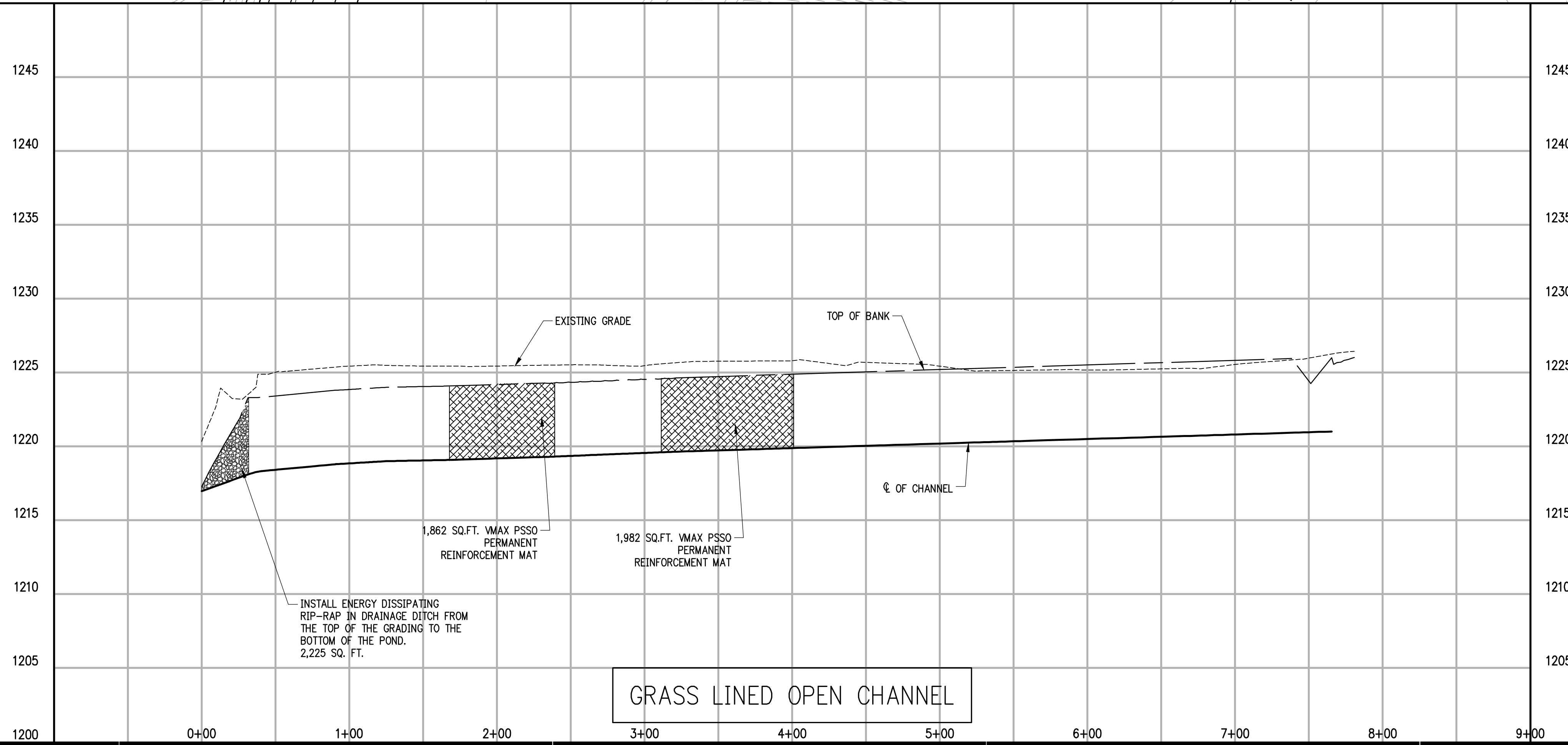
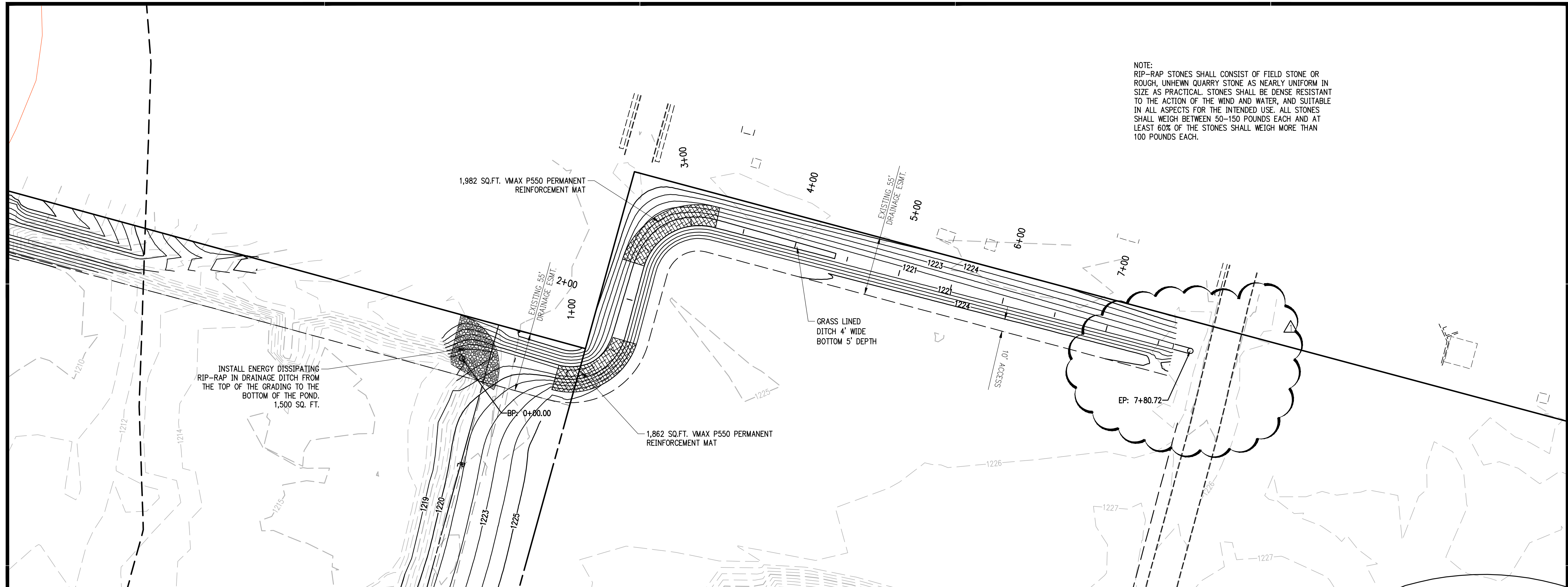
RECORD DRAWING

02/01/2016

APPROVED GRASS LINED OPEN CHANNEL PLAN & PROFILE

**C-212 R-1**

NOTE:  
RIP-RAP STONES SHALL CONSIST OF FIELD STONE OR ROUGH, UNHEWN QUARRY STONE AS NEARLY UNIFORM IN SIZE AS PRACTICAL. STONES SHALL BE DENSE RESISTANT TO THE ACTION OF THE WIND AND WATER, AND SUITABLE IN ALL ASPECTS FOR THE INTENDED USE. ALL STONES SHALL WEIGH BETWEEN 50-150 POUNDS EACH AND AT LEAST 60% OF THE STONES SHALL WEIGH MORE THAN 100 POUNDS EACH.



DRAWING C-14101800 - COVERS PLAN AND PROFILE OF GRASS LINED OPEN CHANNEL. 1/26/2016. 10:57:51 AM. 14101800.dwg. PLOT BY: CRAFTON TULL & ASSOCIATES, INC.